

THE 12 GREATEST VERMEERS



VIEW OF DELFT
c. 1660–1661

38¼×46¼ in.
98.5×117.5 cm.

The Mauritshuis
The Hague



THE MILKMAID
c. 1658–1661

17¾×16 in.
45.45×40.6 cm.

The Rijksmuseum
Amsterdam



**THE GIRL WITH
A PEARL EARRING**
c. 1665–1667

18¼×15¼ in.
46.5×40 cm.

Mauritshuis
The Hague



**WOMAN IN BLUE
READING A LETTER**
c. 1662–1665

18¼×15¾ in.
46.5×38 cm.

The Rijksmuseum
Amsterdam



**MISTRESS
AND MAID**
c. 1666–1667

35½×31 in.
90.2×78.7 cm.

The Frick Collection
New York



A LADY WRITING
c. 1665–1666

17¾×15¾ in.
45×39.9 cm.

The National Gallery
Washington D.C.



**OFFICER AND
LAUGHING GIRL**
c. 1655–1660

19¾×18¾ in.
50.5×46 cm.

The Frick Collection
New York



THE ART OF PAINTING
c. 1662–1668

47¼×39¾ in.
120×100 cm.

Kunsthistorisches Museum
Vienna



**WOMAN HOLDING
A BALANCE**
c. 1622–1665

15¾×14 in.
39.7×35.5 cm.

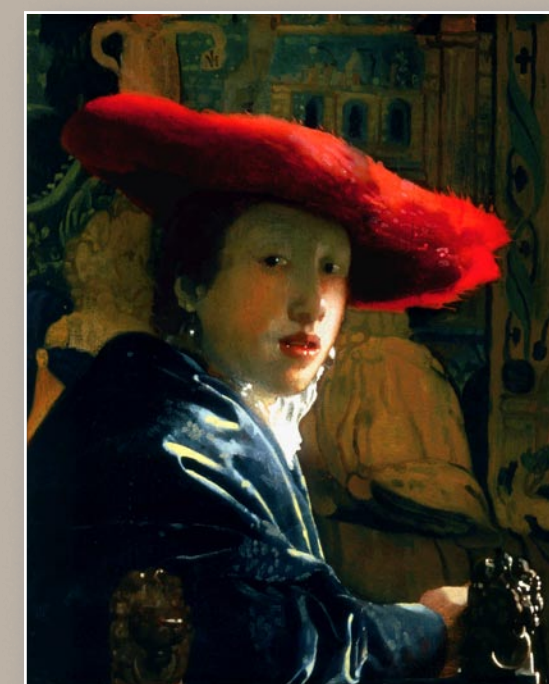
The National Gallery
Washington D.C.



THE LACEMAKER
c. 1669–1671

9¾×8¼ in.
24.5×21 cm.

The Louvre
Paris



**GIRL WITH A
RED HAT**
c. 1665–1666

9×7¾ in.
22.8×18 cm.

The National Gallery
Washington D.C.



THE LITTLE STREET
c. 1657–1661

21¼×17¼ in.
53.5×43.5 cm.

The Rijksmuseum
Amsterdam