

# THE COMPLETE VERMEER



**VIEW OF DELFT**  
c. 1660–1661  
38¼×46¼ in.  
98.5×117.5 cm.  
The Mauritshuis  
The Hague



**THE GIRL WITH A PEARL EARRING**  
c. 1665–1667  
18¼×15¼ in.  
46.5×40 cm.  
Mauritshuis  
The Hague



**DIANA AND HER COMPANIONS**  
c. 1653–1656  
38¼×41¾ in.  
98.5×105 cm.  
Mauritshuis  
The Hague



**WOMAN IN BLUE READING A LETTER**  
c. 1662–1665  
18¼×15¼ in.  
46.5×38 cm.  
The Rijksmuseum  
Amsterdam



**THE MILKMAID**  
c. 1658–1661  
17¼×16 in.  
45.45×40.6 cm.  
The Rijksmuseum  
Amsterdam



**THE LITTLE STREET**  
c. 1657–1661  
21¼×17¼ in.  
53.5×43.5 cm.  
The Rijksmuseum  
Amsterdam



**THE LOVE LETTER**  
c. 1667–1670  
17¼×15¼ in.  
44×38.5 cm.  
Rijksmuseum  
Amsterdam



**THE ASTRONOMER**  
c. 1668  
19¼×17¼ in.  
50×45 cm.  
The Louvre  
Paris



**THE LACEMAKER**  
c. 1669–1671  
9¼×8¼ in.  
24.5×21 cm.  
The Louvre  
Paris



**A LADY SEATED AT A VIRGINAL**  
c. 1670  
20¾×17¼ in.  
51.5×45.5 cm.  
The National Gallery  
London



**WOMAN WITH A PEARL NECKLACE**  
c. 1662–1665  
21¼×17¼ in.  
55×45 cm.  
Staatliche Museen  
Preusscher Kulturbesitz  
Berlin



**THE GEOGRAPHER**  
c. 1668–1669  
20¼×18¼ in.  
53×46.6 cm.  
Städtisches Kunstinstitut  
Frankfurt Am Main



**THE PROCURESS**  
1656  
Oil In Canvas  
56½×51¼ in.  
143×130 cm.  
Staatliche  
Kunstsammlungen  
Dresden



**GIRL READING A LETTER BY AN OPEN WINDOW**  
c. 1657–1659  
32¼×25¼ in.  
83×64.5 cm.  
Staatliche  
Kunstsammlungen  
Dresden



**THE GLASS OF WINE**  
c. 1658–1661  
25¼×30¼ in.  
65×77 cm.  
Staatliche Museen  
Preußischer Kulturbesitz,  
Gemäldegalerie, Berlin



**THE ART OF PAINTING**  
c. 1662–1668  
47¼×39¾ in.  
120×100 cm.  
Kunsthistorisches Museum  
Vienna



**THE GIRL WITH A GLASS OF WINE**  
c. 1659–1660  
30¾×26¼ in.  
78×67 cm.  
Herzog Anton  
Ulrich-museum  
Brunswick



**THE GUITAR PLAYER**  
c. 1669–1672  
20¼×18¼ in.  
53×46.3 cm.  
Kenwood  
English Heritage As  
Trustees Of The  
Iveagh Bequest



**LADY WRITING A LETTER WITH HER MAID**  
c. 1670–1671  
28×23 in.  
71.1×58.4 cm.  
National Gallery  
Dublin



**A LADY STANDING AT A VIRGINAL**  
c. 1670–1673  
20¾×17¼ in.  
51.7×45.2 cm.  
National Gallery  
London



**THE MUSIC LESSON**  
c. 1662–1664  
28¾×25¼ in.  
73.3×64.5 cm.  
The Royal Collection  
The Windsor Castle



**CHRIST IN THE HOUSE OF MARTHA AND MARY**  
c. 1654–1656  
63×53¼ in.  
160×142 cm.  
National Gallery  
Edinburgh



**THE CONCERT**  
c. 1664–1667  
28½×25 2 in. ???  
72.5×64.7 cm.  
Isabella Gardner Museum  
Boston (Stolen)



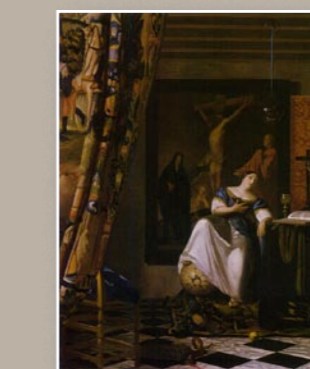
**OFFICER AND LAUGHING GIRL**  
c. 1655–1660  
19¾×18¼ in.  
50.5×46 cm.  
The Frick  
Collection  
New York



**GIRL INTERRUPTED IN HER MUSIC**  
c. 1658–1661  
28¾×25¼ in.  
73.3×44.4 cm.  
The Frick Collection  
New York



**MISTRESS AND MAID**  
c. 1666–1667  
35¼×31 in.  
90.2×78.7 cm.  
The Frick Collection  
New York



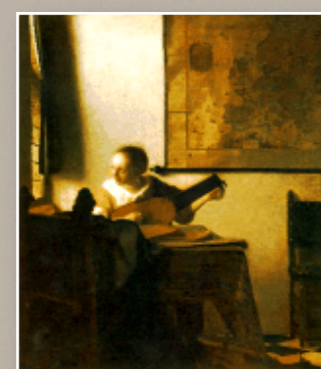
**ALLEGORY OF FAITH**  
c. 1671–1674  
54×35 in.  
114.3×88.9 cm.  
The Metropolitan  
New York



**A MAID ASLEEP**  
c. 1656–57  
34¼×30¼ in.  
87.6×76.5 cm.  
The Metropolitan  
New York



**YOUNG WOMAN WITH A WATER PITCHER**  
c. 1662–1665  
18×16 in.  
45.7×40.6 cm  
The Metropolitan  
New York



**WOMAN WITH A LUTE**  
c. 1662–1664  
20¼×18 in.  
51.4×45.7 cm  
The Metropolitan  
New York



**GIRL WITH A RED HAT**  
c. 1665–1666  
Oil on panel  
9×7¼ in.  
22.8×18 cm.  
The National Gallery  
Washington D.C.



**A LADY WRITING**  
c. 1665–1666  
17¼×15¼ in.  
45×39.9 cm.  
The National Gallery  
Washington D.C.



**WOMAN HOLDING A BALANCE**  
c. 1622–1665  
15¼×14 in.  
39.7×35.5 cm.  
The National Gallery  
Washington D.C.



**GIRL WITH A FLUTE (Attributed)**  
c. 1665–1670  
Oil On Panel  
7¾×7 in.  
20×17.8 cm.  
National Gallery  
Washington D.C.



**A YOUNG WOMAN SEATED AT THE VIRGINALS (Recently attributed)**  
c.1670  
9¾×7¾ in.  
25.2×20 cm.  
Wynn Casino  
Las Vegas